



Roslyn, a retreat center of the Episcopal Diocese of Virginia, serves religious, charitable and public service organizations. We provide an environment free of outside interruptions and maintain a quiet and contemplative tone throughout the grounds. Here is what you can expect when you come to Roslyn:

REGISTRATION (POWERS HALL)

All visitors are asked to register upon arrival. The registration desk, located in Powers Hall, is open from 7:30 am to 4:00 pm (10:00 pm when guests are in residence). Staff members who reside on the property are available to assist overnight guests when the office is closed.

ACCOMMODATIONS

Check-in time is 2:00 pm and check-out time is 9:00 am. All guest rooms have a private bath, a telephone and an alarm clock. In keeping with the retreat center spirit, there are no televisions in our guest rooms. Towels, linens, soap, and shampoo are supplied. Housekeeping services are provided on a daily basis.

DINING

Meals are professionally prepared and served buffet style in the main dining hall at the times listed.

Breakfast	8:00 am
Lunch	12:30 pm
Dinner	6:00 pm (6:30 pm on Friday)

INTERNET ACCESS

Wireless internet access is available in all guest rooms, meeting spaces and common areas. For your convenience, a computer with internet access and a printer are available in Powers Hall.

POWERS HALL

The daily newspaper, puzzles, games, books and DVDs are available in Powers Hall.

ACTIVITIES

There are wooded trails throughout the property as well as benches in quiet spots for conversation, reading and meditation. Stocked fireplaces on screened-in porches are located in the Goodwin, Pullman and Palmer lodges and are open to all guests. The Fitness Center, located in Tucker Hall, offers a variety of exercise equipment and is available daily.

LAUNDRY FACILITY

Guests may use the laundry facility which is located in the lower level of the Dining Hall. All machines accept quarters only. The washing machine is \$1.50/load and the dryer is \$1.00/load. Laundry detergent is available for \$1.00 at the front desk.

SMOKING

We are a smoke-free environment. There are smoking areas outside with ashtrays.

PETS

NO PETS are allowed at Roslyn (except for service dogs).

EXTRAS

Roslyn is a walking campus. Please bring comfortable shoes and a flashlight to use at night.

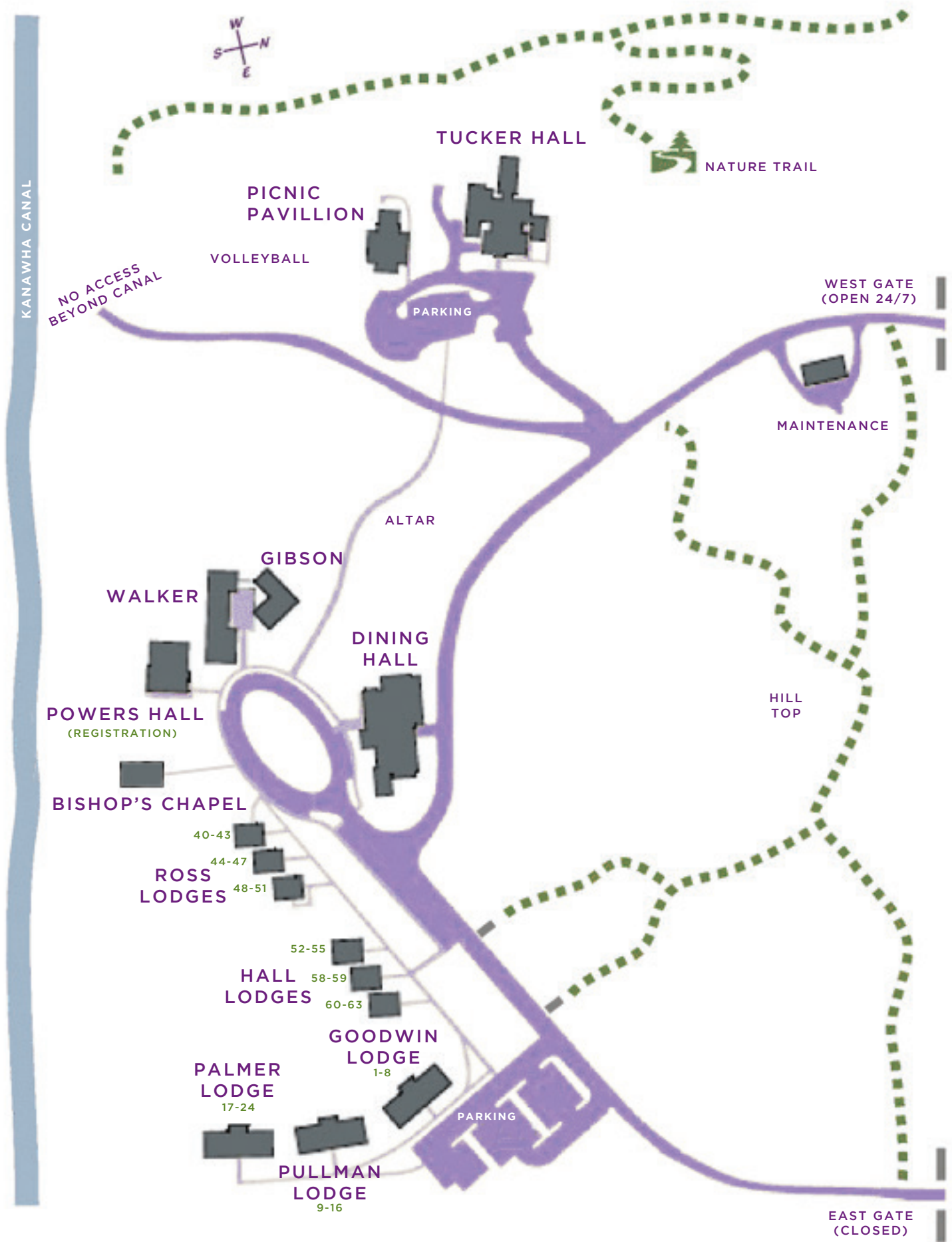
EMERGENCY CONTACT

Guests can be reached by calling 1.800.477.6296 (local number is 804.288.6045) and speaking with the registration desk or by following the voicemail prompts.

INFORMATION

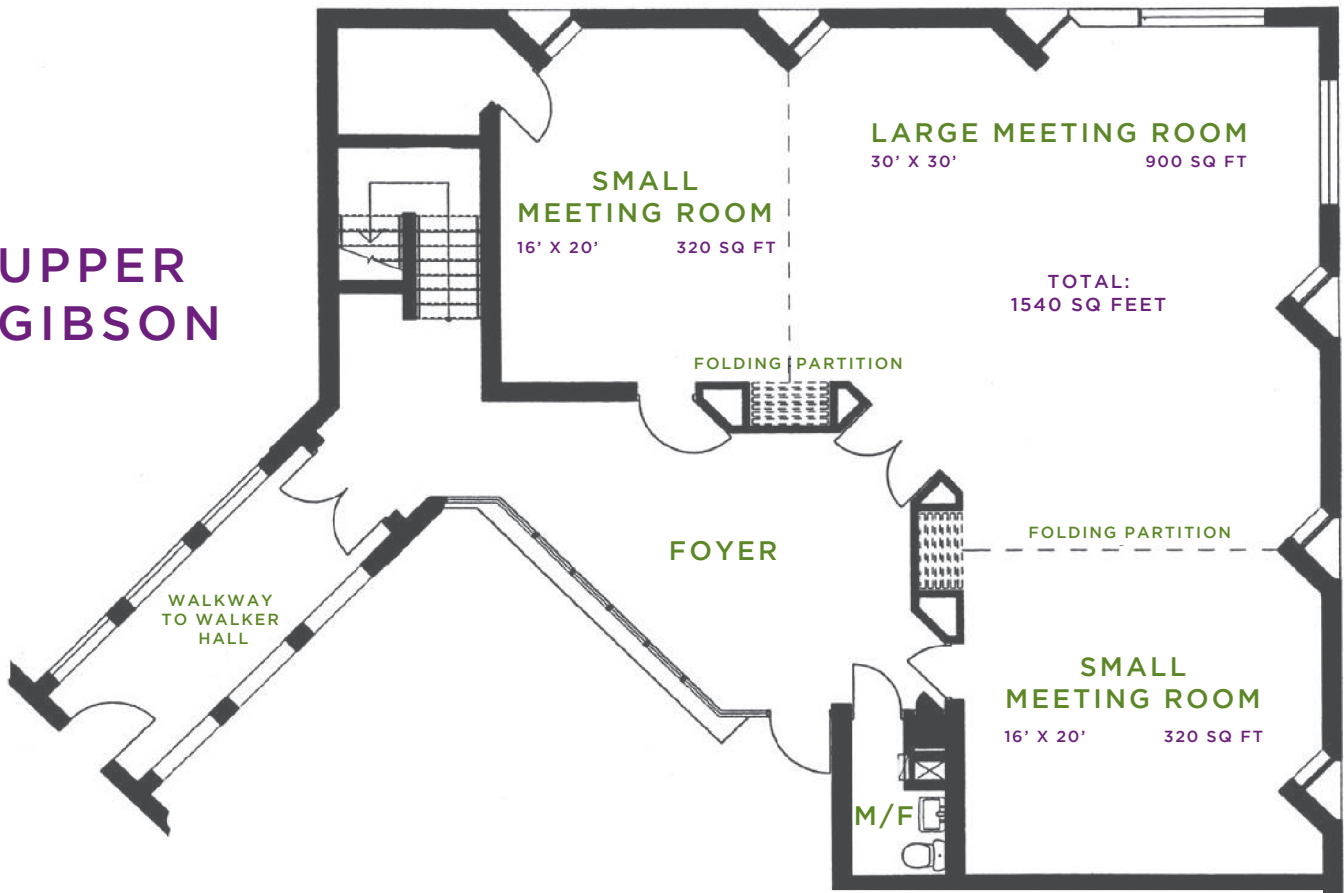
For more information, please visit our website at www.roslyncenter.org or call us at 1.800.477.6296 (local number is 804.288.6045).

See map and floor plans on the following pages.

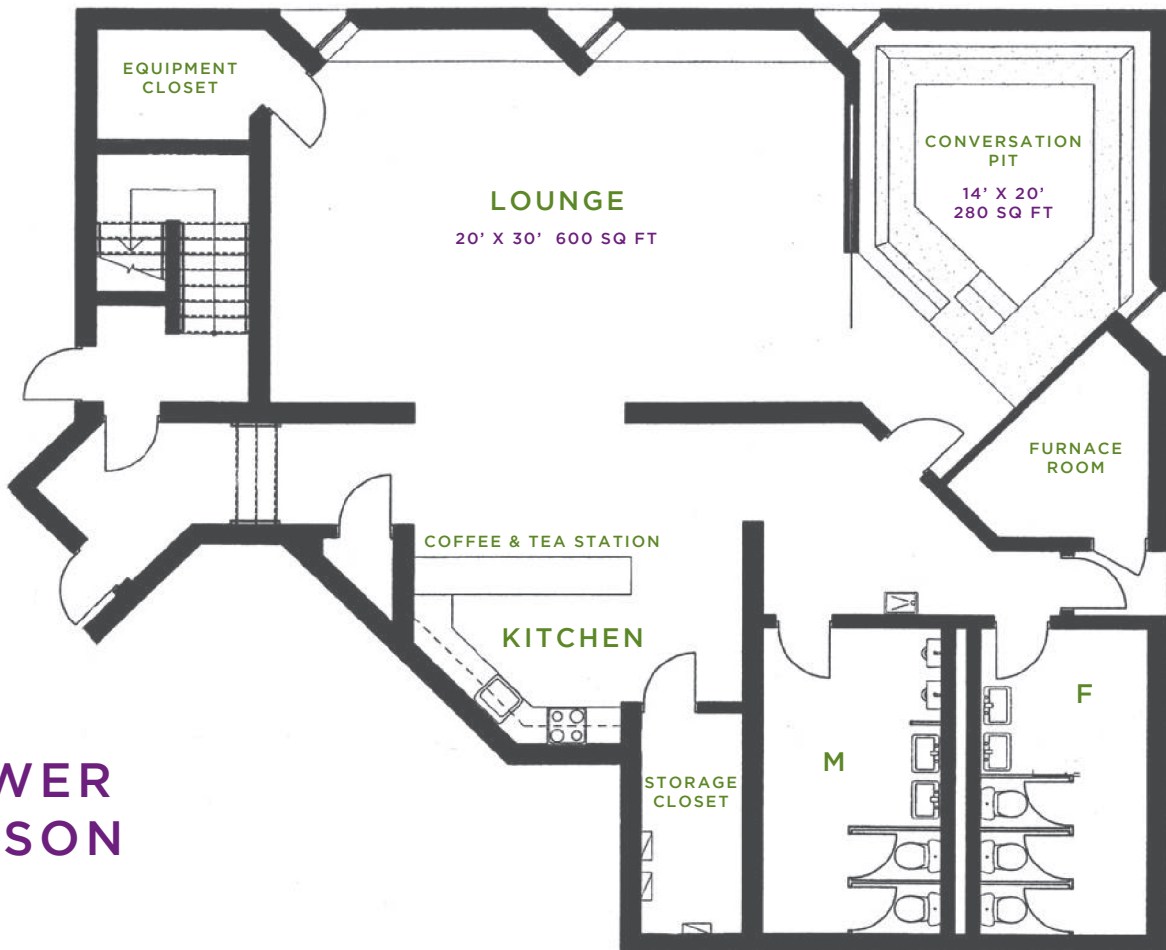


GIBSON HALL

UPPER GIBSON



LOWER GIBSON



WALKER HALL

